

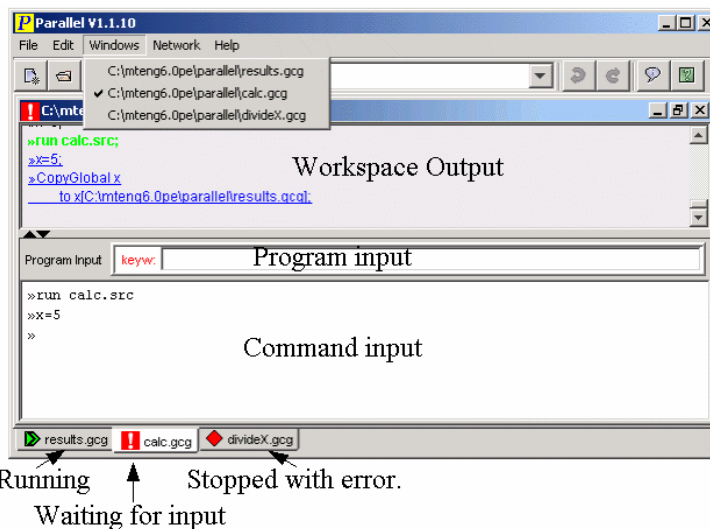
Parallel & Parallel GE v1.1 for GAUSS & GAUSS Engine

By: Forward Software

GAUSS™

What is Parallel?

A networked user interface for the GAUSS Mathematical & Statistical System (GAUSS)™ or the GAUSS Engine™, new from Forward Software. With Parallel you can run multiple GAUSS workspaces simultaneously on either local or remote computers. Increase your productivity and maximize your use of computer resources with Parallel™ or Parallel GE™.



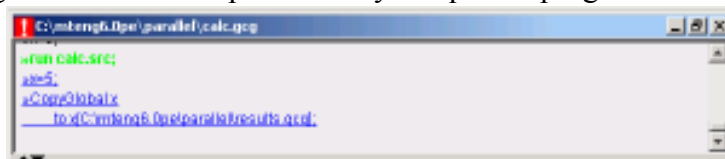
Boost GAUSS' Productivity. Use Parallel or Parallel GE to:

Increase Your Productivity:

- Run GAUSS programs in multiple workspaces at the same time.
- Distribute multiple GAUSS workspaces across networked computers.
- Write your own parallel programs without a computer science degree...with just 3 three extra commands. In most cases your existing GAUSS programs can be incorporated into a Parallel program with no changes required.
- Use the Parallel command log as the bases for your Parallel command files to automate your parallel programs.

Maximize Computer Resources:

- Make use of your multi-processor hardware or extra computers to increase GAUSS' throughput.
- Continue preparing and queueing programs for execution while your program is running.
- Continue working in another workspace while your queued programs are running.



The green command is currently running, while the blue underlined commands are waiting to be executed.

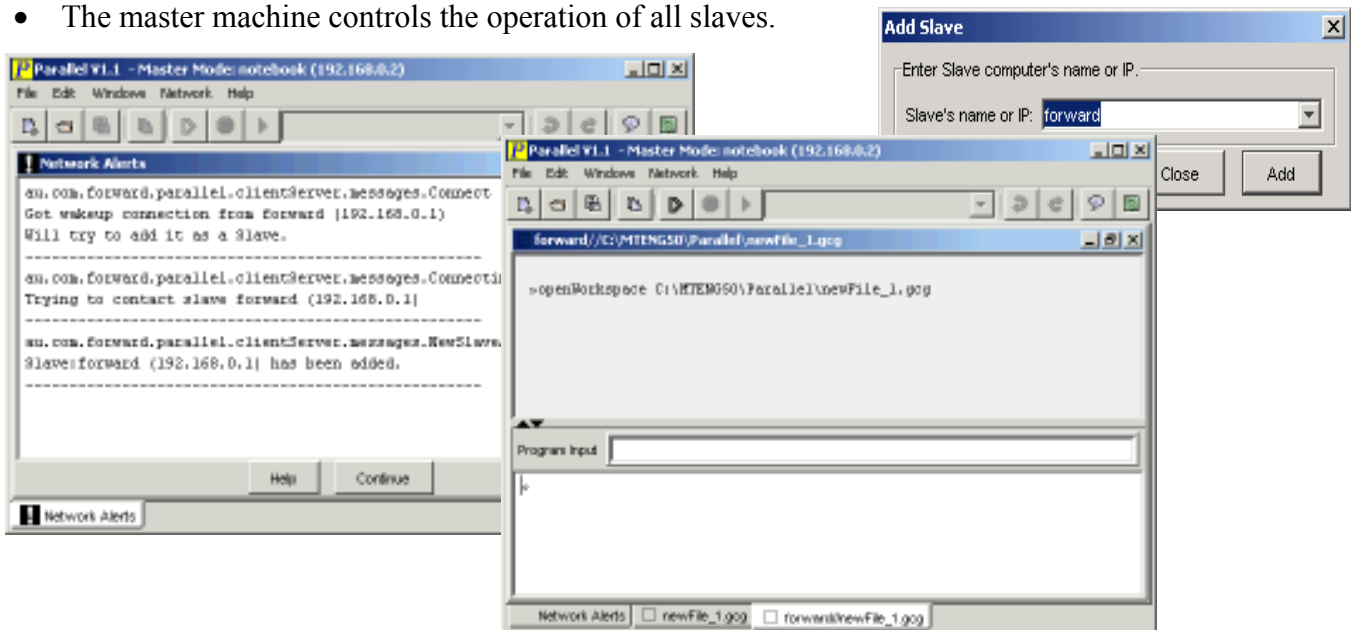
- Type ahead to supply input to GAUSS programs.
- Supply input from your programs for un-attended execution.
- Transfer source and data files between computers and then start the GAUSS program running on a remote computer.

Increase GAUSS/GAUSS Engine Functionality:

- View the names of the global Strings, Matrices and String Arrays that exist in a workspace and drag and drop to copy them to another workspace.
- No need to save. All your work is saved as you do it.
- When you come back to Parallel, the workspaces are just as you left them.
- An extensive Undo/Redo function lets you recover from errors. Recover your workspace after GAUSS' autodelete removes all your globals. Even recover when you overwrite an existing workspace using the SaveAs function.

Set up a Network of Computers Running Parallel for Increased Computing Power:

- The master machine controls the operation of all slaves.



- A copy of Parallel and GAUSS is required for each machine on a Parallel network.

Platforms: Requires GAUSS Mathematical & Statistical System v5.0+ for Windows or GAUSS Engine 5.0+ for Windows. LINUX version available soon.

Pricing and Information: Contact Aptech or your local Dealer for pricing and information. See our website for the Dealer nearest you: <http://www.Aptech.com>. A PDF version of the Parallel/Parallel GE manual is available at <http://www.Aptech.com> under Products/Third Party Applications/Parallel.

*Parallel and Parallel GE are trademarks of Forward Software. Copyright 2003. All Rights Reserved Worldwide.
 GAUSS and GAUSS Engine are trademarks of Aptech Systems, Inc. Copyright 1983-2004. All Rights Reserved Worldwide.*

Aptech Systems Inc.

23804 SE Kent-Kangley Road, Maple Valley, WA 98038 USA

Phone: (425) 432-7855 ♦ FAX: (425) 432-7832 ♦ info@Aptech.com ♦ URL: www.Aptech.com